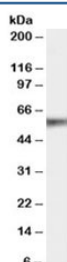


Eph Receptor B2 Antibody [EPHB2] (R35317)

Catalog No.	Formulation	Size
R35317-100UG	0.5 mg/ml in 1X TBS, pH7.3, with 0.5% BSA (US sourced) and 0.02% sodium azide	100 ug

[Bulk quote request](#)

Availability	1-3 business days
Species Reactivity	Human
Predicted Reactivity	Dog, Mouse, Rat
Format	Antigen affinity purified
Clonality	Polyclonal (goat origin)
Isotype	Goat Ig
Purity	Antigen affinity
Gene ID	2048
Applications	Western Blot : 1-3ug/ml ELISA (peptide) LOD : 1:4000
Limitations	This EPHB2 antibody is available for research use only.



Western blot testing of human lung lysate with EPHB2 antibody at 1ug/ml. Predicted molecular weight: ~117/53kDa (full length/C-terminal fragment).

Description

Additional name(s) for this target protein: EPH receptor B2

Application Notes

Optimal dilution of the EPHB2 antibody should be determined by the researcher.

1. The protein is cleaved into an ~62 kDa N-terminal fragment and an ~53kDa C-terminal fragment. This Ab is able to

detect the full length protein and C-terminal fragment.

Immunogen

Amino acids QKDRNHRPKFGQ were used as the immunogen for this EPHB2 antibody.

Storage

Aliquot and store the EPHB2 antibody at -20oC.